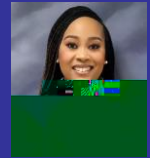




Early College High

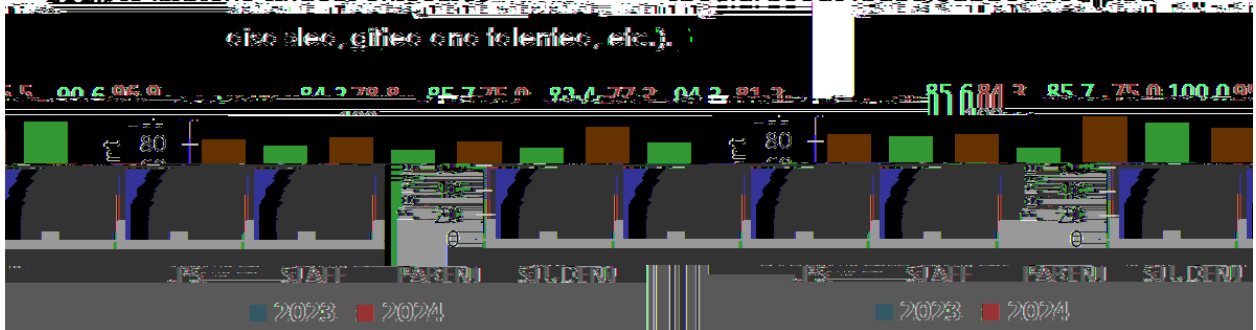
500 West County Line Road,
Tougaloo, MS 39174
(601) 977-6160
<https://www.jackson.k12.ms.us/echs>



Mrs. Ashley Molden
Principal

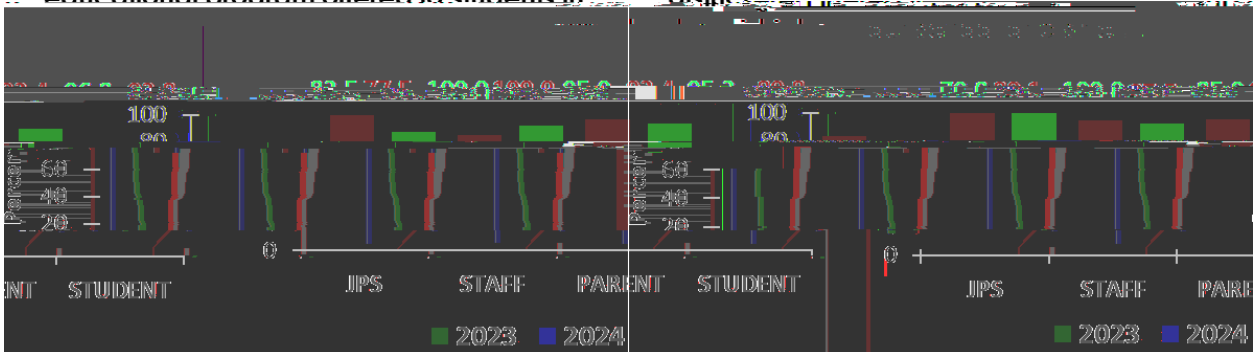
1. Leaders have established processes to develop the vision, mission, and strategic

4. The programs of this school or district meet the requirements of students with



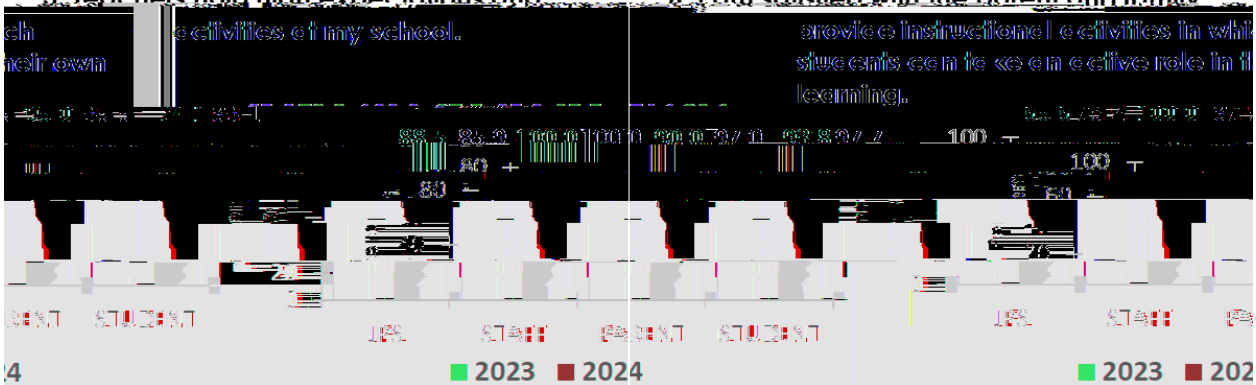
2. I am satisfied with the quality of the educational program offered to students in

5. Parents feel welcome in our school or district



3. Teachers hold high expectations and

6. I am satisfied with the parent and family





Early College High

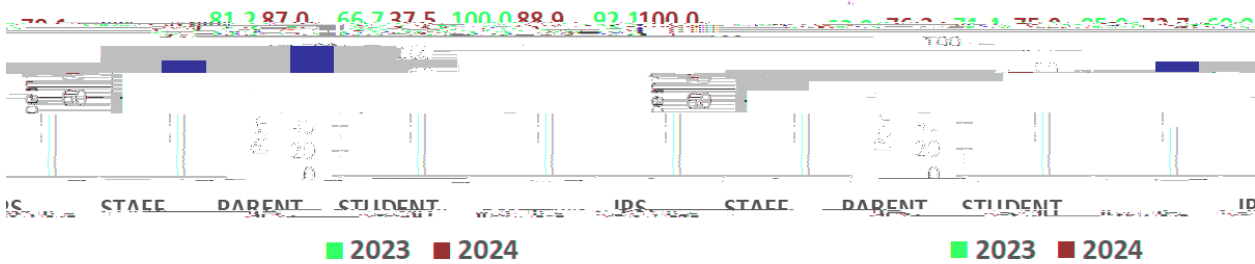
500 West County Line Road,
Tougaloo, MS 39174
(601) 977-6160
<https://www.jackson.k12.ms.us/echs>



Mrs. Ashley Molden
Principal

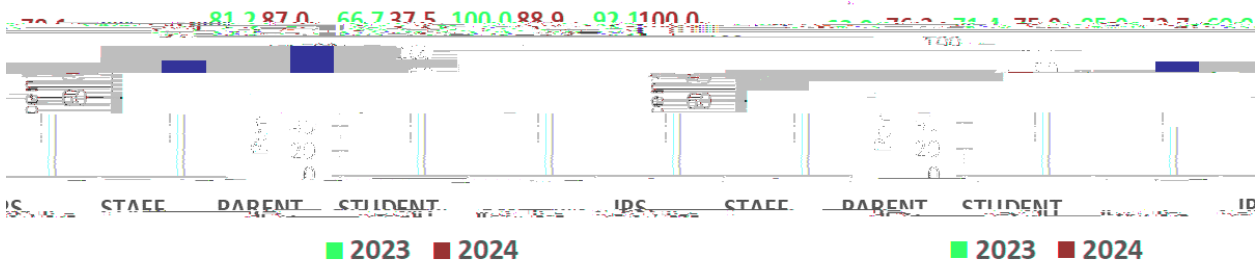
7. Our school or district provides students

programs.



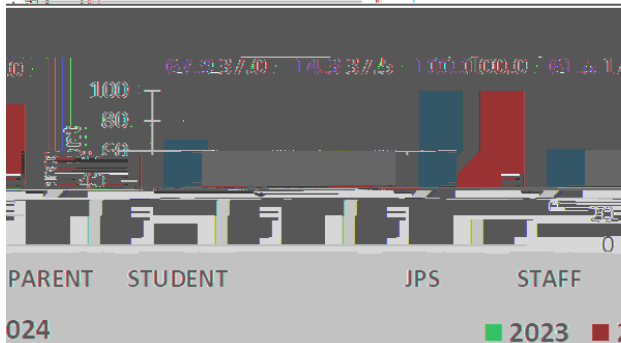
10. My child's academic performance has

improved since we started in school. How much improvement do you see in your child's academic performance?



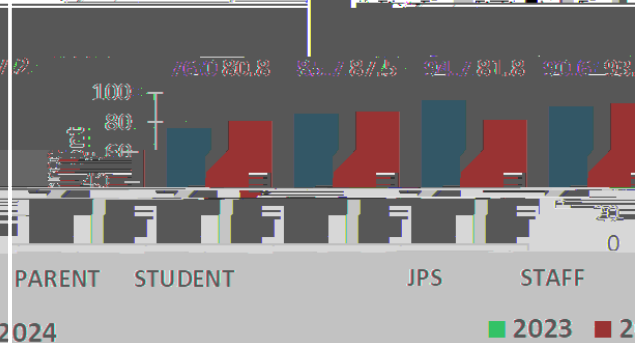
9. My child's teacher

is knowledgeable about the subject they teach.



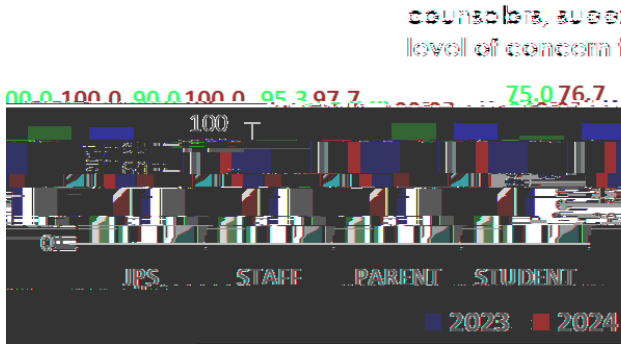
10. My child's teacher

is knowledgeable about the subjects they teach.



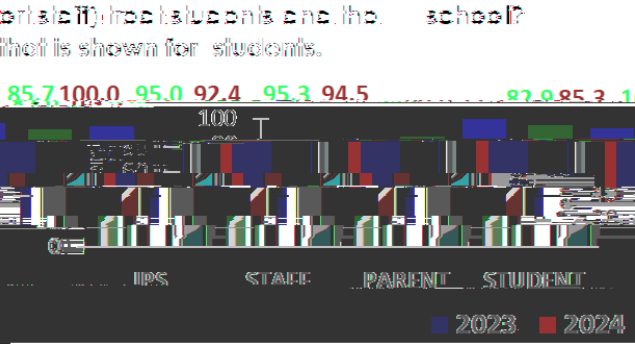
11. My child's teacher is available to help

them when they need it.



12. My child's teacher communicates with parents

about their child's progress in school.



counselors, specialists, instructional staff and the school? How much concern do you see in the level of concern that is shown for students.